

2018

The Trench Guard Drain Insert

Trench Guard

Drawing on years of field experience, the Inland engineering team designed and developed the trench **Guard** drain system as a solution to trench drain containment. The custom trench **Guard** is highly effective in preventing unwanted runoff during situations where containment is essential.

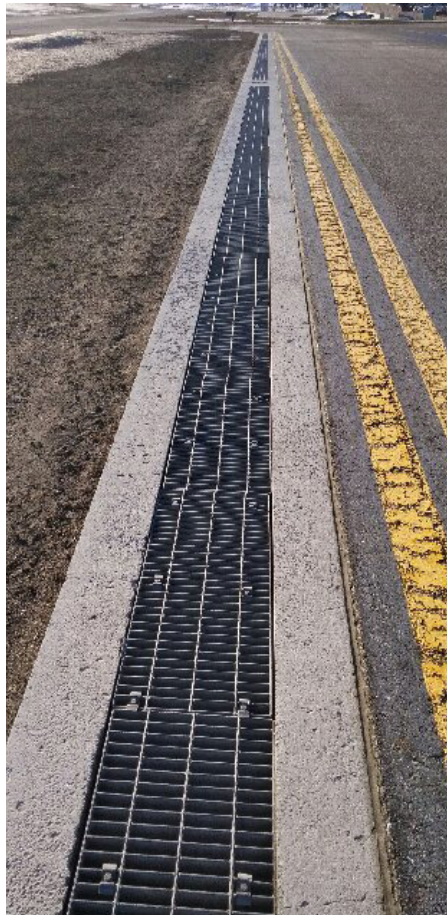
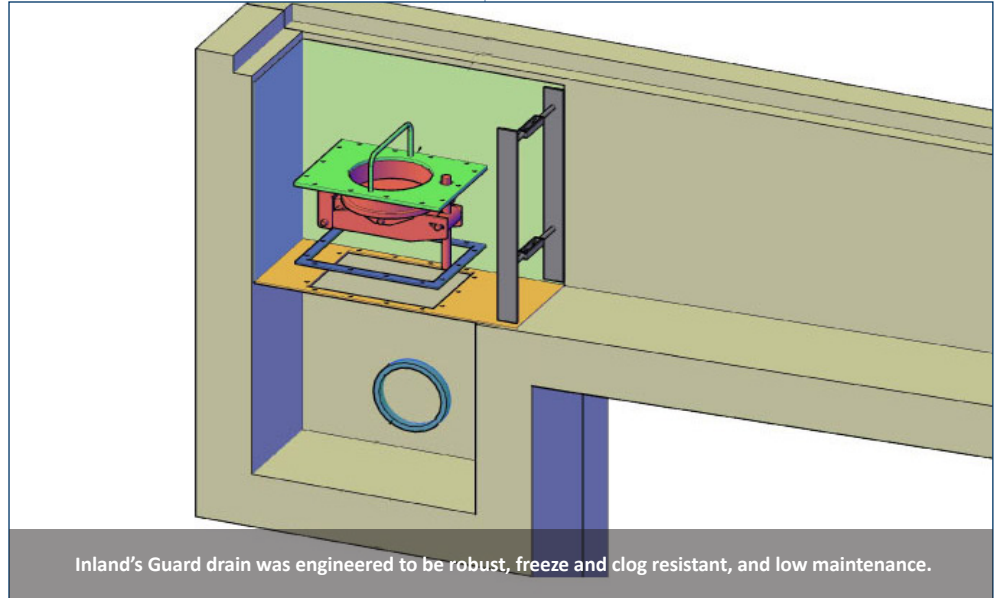
Drop Down Drain

The trench **Guard** valve mechanism drops down to open. Because of the design, sediment build-up is prevented as water flow helps keep the surface area free of debris. The unit is virtually impervious to freezing or clogging. The frame is fitted with two turnbuckles to tighten the unit against the side walls, then sealant is applied. This ensures a strong seal and effluent containment.

Installation

The trench **Guard** is simple and easy to install. Given the size of a typical trench drain, a compact deep 3-sided custom box directly above the outlet pipe allows the trench to drain to the lowest point. The **Guard** is manufactured in stainless steel.

Installation is carried out using simple tools to raise the grate and drop the unit in place. We recommend an annual check of the gaskets to ensure seal integrity. The valve portion is easily unbolted via the lift handle. The valve operating mechanism is a hexagonal head, which is easily accessed using a bright orange bendable key marker.



For additional information, please contact marketing@inlandgroup.ca

Trench Guard Key Features

- Containment performance
- Ease of installation & operation
- Freeze resistance
- Robustness / Low maintenance

Specifications

Weight: Approximately 50 kilos/110 lbs

Material:
304 stainless steel drain system

Capacity: Shallow basin (2.7 L) to maximize recovery

Optional: Hydrocarbon removal filtration sleeve